



# HUNTER'S HILL COUNCIL

## SIGNIFICANT TREE REGISTER

### TREE PROFILE SHEET

#### 1. LOCATION OF PROPERTY

House No:

Street: Barons Crescent (Junction of Blaxland Street and Pains Road)

Suburb: Hunters Hill

Post Code: 2110

GPS Co ordinates : Longitude 151.139058°E Latitude 33.819116°S



#### 2. DETAILS

Listed Significant Trees:

Botanical Name	Common Name
<i>Eucalyptus pilularis</i>	Blackbutt
<i>Angophora costata</i>	Sydney Red Gum
<i>Syncarpia glomulifera</i>	Turpentine
<i>Eucalyptus piperita</i>	Sydney Peppermint

Public or Private Type: Public

Group or Individual: Group

Date of Assessment/Inspection: November 23

#### 3. STATEMENT OF SIGNIFICANCE

The mixed group of *Eucalyptus pilularis* (Blackbutt), *Angophora costata* (Sydney Red Gum), *Syncarpia glomulifera* (Turpentine) and *Eucalyptus piperita* (Sydney Peppermint) located along the Lane Cove River foreshore form part of a locally significant vegetation corridor. These remnant bushland pockets form important wildlife habitat links through the area, from the peninsula along the rivers and on to the Lane Cove National Park. The collection of trees is believed to be regrowth of the original community rather than cultivated specimens (*ecological, botanical and scientific value*).

The mixed group of trees are a vital component of the visual quality of the Lane Cove River foreshore (*aesthetic value*).

The mixed group of trees make an important contribution to the unique sense of place along the Lane Cove River and are associated with the increase in awareness surrounding bush regeneration from the 1970's onwards (*historic value*).

The mixed group of *Eucalyptus pilularis* (Blackbutt), *Angophora costata* (Sydney Red Gum), *Syncarpia glomulifera* (Turpentine) and *Eucalyptus piperita* (Sydney Peppermint) are considered to have group significance at a local level in terms of ecological, botanical and scientific, aesthetic and historic value.



## BARONS CRESCENT, HUNTERS HILL - SIGNIFICANT TREE REGISTER

### 4. IMAGES



### 5. SIGNIFICANCE ATTRIBUTES

Cultural/Social/Commemorative  Historic  Botanical/Scientific  Ecological  Visual/Aesthetic

### 6. SIGNIFICANCE LEVEL

Local  State  National

### 7. BACKGROUND

The subject trees are located along the Lane Cove River foreshore, to the north of Barons Crescent, to the east of Pains Road and immediately south of Buffalo Creek Reserve.

The dominant vegetation community of the area would have once been Coastal Sandstone Foreshore Forest. Coastal Sandstone Foreshore Forest occurs on sheltered sandstone slopes along the foreshores of Sydney's major waterways and coastal escarpments. It is an open forest with a moist shrub layer and a ground cover of ferns, rushes and grasses. The canopy can be dominated by pure stands of *Angophora costata* (Sydney Red Gum), though more regularly this is found in combination with other tree species. Localised patches of *Eucalyptus piperita* (Sydney Peppermint) and *Eucalyptus pilularis* (Blackbutt) prefer more protected locations and in the case of the latter some minor shale enrichment in the soil.

Originally the land of Buffalo Creek Reserve was part of the flood plain and much of it was covered with saltmarsh vegetation with some mangroves along the creek. At the end of the 19th century there were relatively few mangroves, but their extent expanded greatly when the creeks and Lane Cove River silted up as a result of urban development.

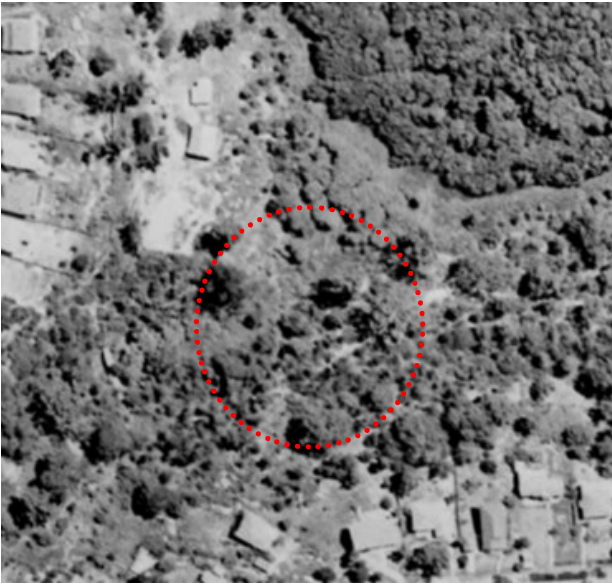
The subject trees are considered to be regrowth rather than cultural plantings; isolated clearing would have occurred during the 19th century. Some of the smaller specimens are likely to be as young as 30 years.

These remnant bushland pockets form important wildlife habitat links through the area, from the peninsula along the rivers and on to the Lane Cove National Park.



## BARONS CRESCENT, HUNTERS HILL - SIGNIFICANT TREE REGISTER

---



Aerial image 1955  
Image Source: NSW Government Historical Imagery



Aerial image 2024  
Image Source: NSW Government Historical Imagery