



HUNTER'S HILL COUNCIL

SIGNIFICANT TREE REGISTER

TREE PROFILE SHEET

1. LOCATION OF PROPERTY

House No:

Street: Ryde Road

Suburb: Hunters Hill

Post Code: 2110

GPS Co ordinates : Longitude 151.142571°E Latitude 33.832520°S



2. DETAILS

Listed Significant Trees:

Botanical Name	Common Name
<i>Lophostemon confertus</i>	Brush Box

Public or Private Type: Public

Group or Individual: Group

Date of Assessment/Inspection: November 23

3. STATEMENT OF SIGNIFICANCE

The *Lophostemon confertus* (Brush Box) that dominate the mixed avenue along Ryde Road collectively contribute to the landscape quality of the area. The Ryde Road streetscape is locally prominent and considered an aesthetically distinctive streetscape with landmark qualities (*aesthetic value*).

The *Lophostemon confertus* (Brush Box) are indicative of the popularity of the species for public and civic planting scheme during the Inter-war and Post-War periods (*historic value*).

The *Lophostemon confertus* (Brush Box) are considered to have group significant at a local level in terms of aesthetic and historic value.

4. IMAGES





RYDE ROAD, HUNTERS HILL - SIGNIFICANT TREE REGISTER

5. SIGNIFICANCE ATTRIBUTES

Cultural/Social/Commemorative

Historic

Botanical/Scientific

Ecological

Visual/Aesthetic

6. SIGNIFICANCE LEVEL

Local

State

National

7. BACKGROUND

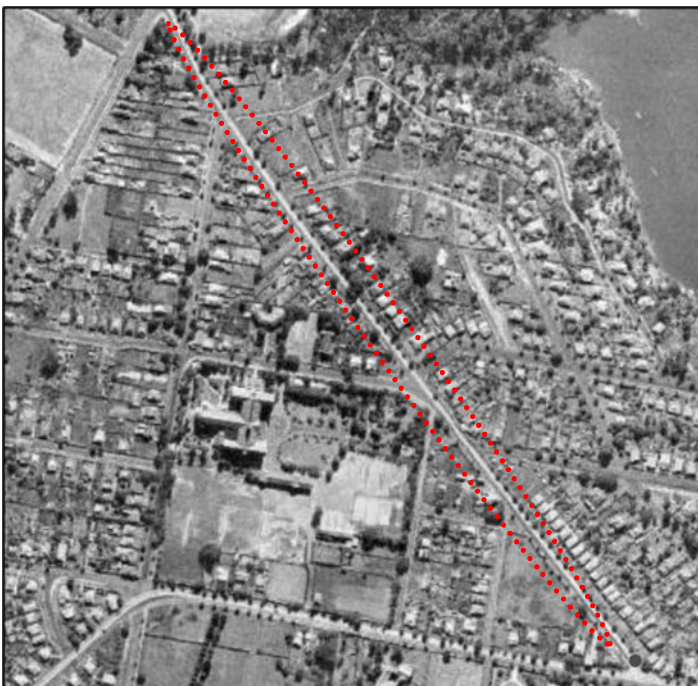
Lophostemon confertus (Brush Box) is a rainforest margin species that is highly adaptable under harsh urban conditions and will tolerate drought as well as regular pruning/alignment for overhead powerlines and other services. The Brush Box may achieve large proportions under optimum conditions but tends to be much smaller in a suburban setting.

During the Federation period, Brush Box became the preferred street tree of the new garden suburbs of Sydney. The popularity of Brush Box as a street tree continued throughout the Inter-war period (c. 1919-1939) and much of the Post-War II. Brush Box have also frequently been used in commemorative plantings, particularly in association with war memorials. It is documented that electric street lighting was introduced to Hunters Hill in 1920 and that the Norfolk Island Pines, which had formerly lined Woolwich Road, were cut down to make way for the wires and poles. The Norfolk Island Pines were replaced with Brush Box.¹

Aerial photos from 1943 show the Brush Box along Ryde Road as small trees. The trees are planted on both sides of the road, but do not appear uniformly spaced. Similar sized Brush Box are also noted along Gladesville Road and Martin Road.

The Ryde Road streetscape is locally prominent and considered an aesthetically distinctive streetscape with landmark qualities. The streetscape is representative of the raised awareness of Australian native trees, beginning during the 1940's and 1950's and the wider focus on environmental issues during the 1960's and 1970's.

The Brush Box along Ryde Road have been interplanted over time with a variety of species. The integrity of the streetscape has been compromised, particularly towards Pittwater Road, where *Corymbia* species have been incorporated.



Aerial image 1943

Image Source: NSW Government Historical Imagery

References:

¹ Sherry, Beverley. 1989, *Hunter's Hill Australia's Oldest Garden Suburb*, David Ell Press, pg 109